

SPECIAL DISTRICT PUBLIC DISCLOSURE DOCUMENT

ABILENE STATION METROPOLITAN DISTRICT NO. 1

As required pursuant to Section 32-1-104.8 of the Colorado Revised Statutes ("C.R.S.") This Public Disclosure Document has been prepared by Abilene Station Metropolitan District No. 1 (the "District") to provide information regarding the District.

DISTRICT'S POWERS

The powers of the District as authorized by Section 32-1-1004, C.R.S. and under its Service Plan, as approved by City Council of the City of Aurora ("City") on July 24, 2006, are to plan for, design, acquire, construct, install, relocate, redevelop and/or finance certain public improvements as generally described in the Special District Act, except as specifically limited in Section V of the District's Service Plan to serve the future taxpayers and inhabitants of the Service Area as determined by the Board of Directors of the District.

DISTRICT'S SERVICE PLAN

The District's Service Plan, which can be amended from time to time, includes a description of the District's powers and authority. A copy of the District's Service Plan is available from the Division of Local Government in the State Department of Local Affairs ("Division").

The Abilene Station Metropolitan District No. 1 is authorized by Title 32 of the Colorado Revised Statutes to use a number of methods to raise revenues for capital needs and general operations costs. These methods, subject to the limitations imposed by Section 20 of Article X of the Colorado Constitution ("TABOR"), include issuing debt, levying taxes, and imposing fees and charges. Information concerning District directors, management, meetings, elections, and current taxes are provided annually in the Notice to Electors described in Section 32-1-809(1), C.R.S., which can be found at the District office, on file at the Division, or on file at the office of the Clerk and Recorder of Arapahoe County.

DISTRICT MAP

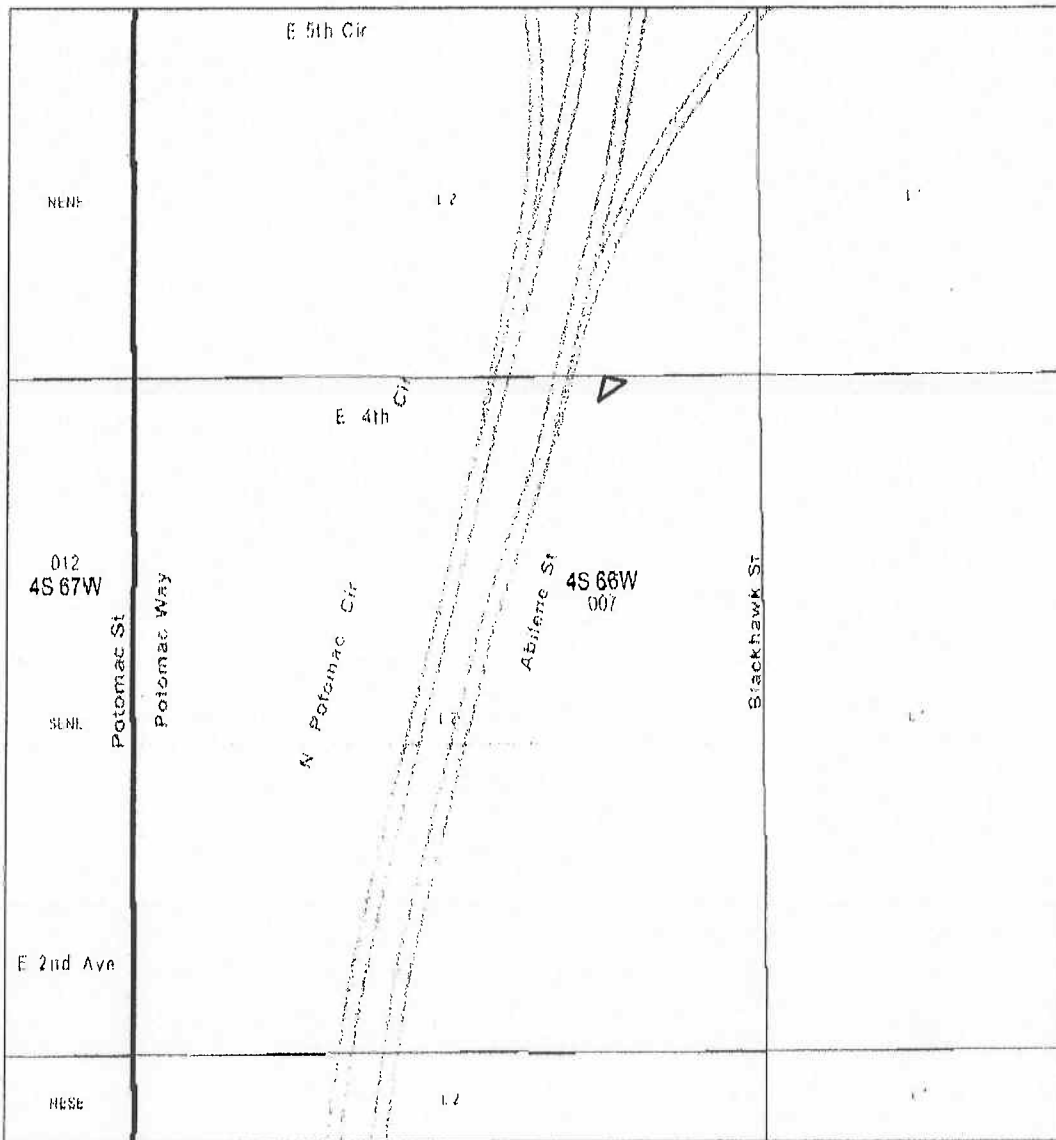
A map of the District's boundaries is attached hereto as Exhibit A.

Dated this 6th day of October, 2014.

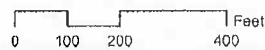
EXHIBIT A (DISTRICT MAP)

Abilene Station Metro. District #1

December 21, 2009



Legal Description:
65793_ABSTMD1_E_041309
65793_ABSTMD1_L_082207
65793_ABSTMD1_O_031607



NOLTE
PLAT & SURVEYING