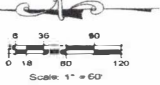


ABILENE STATION METROPOLITAN DISTRICT NO. 1

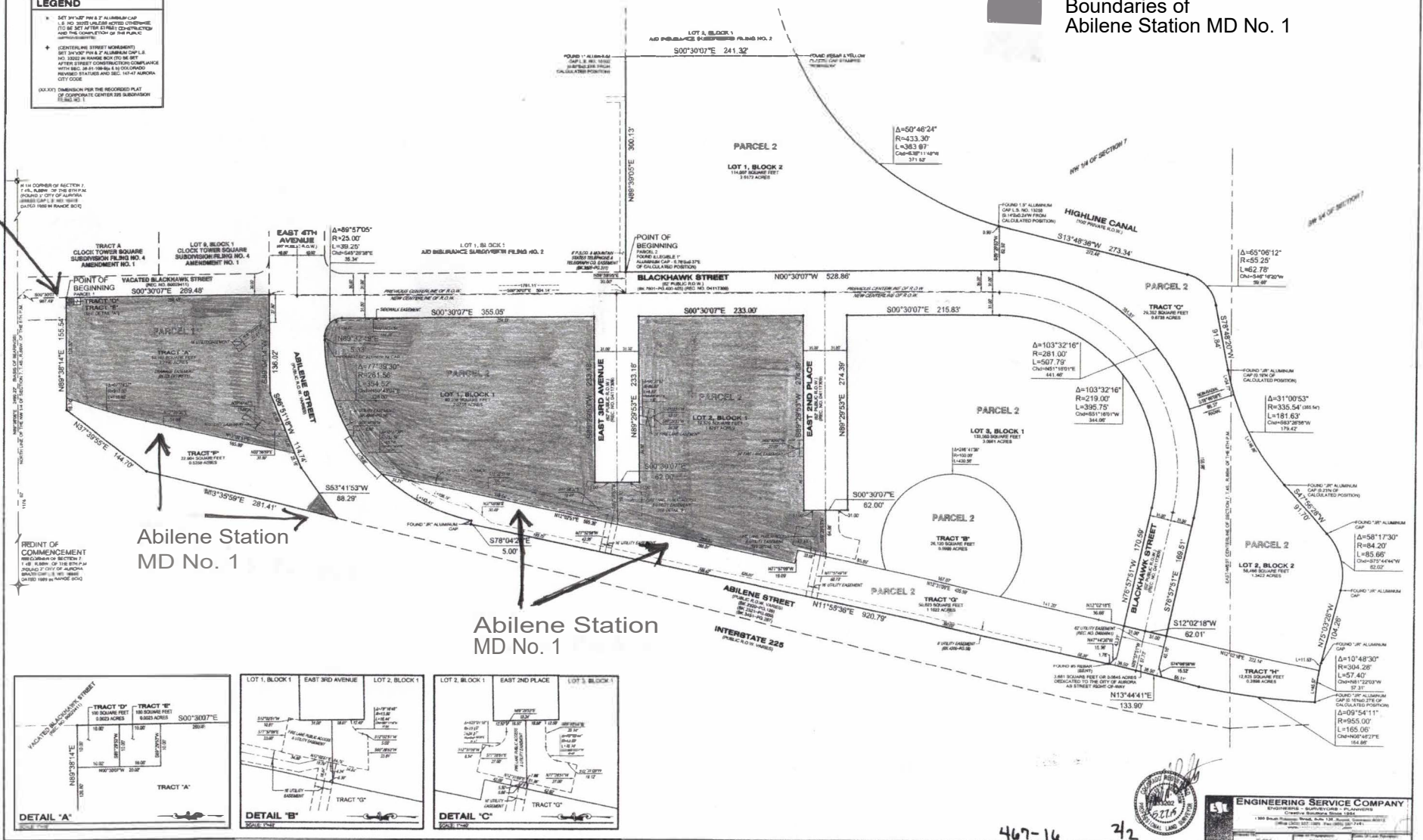
Key

Boundaries of Abilene Station MD No. 1



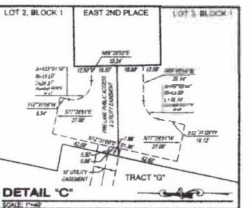
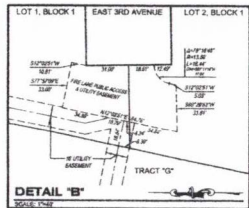
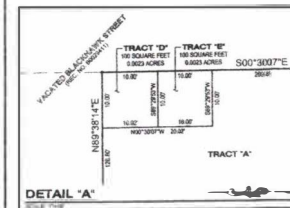
- LEGEND**
- SET 3/4" x 3/4" PAW & 2" ALUMINUM CAP L.S. NO. 3005 (ALUMINUM NOTED OTHERWISE) TO BE SET AT THE STRIP CONSTRUCTION AND THE COMPLETION OF THE PUBLIC IMPROVEMENTS.
 - CENTRALINE STREET MONUMENT SET 3/4" x 3/4" PAW & 2" ALUMINUM CAP L.S. NO. 3005 IN RANGE BOX TO BE SET AFTER STREET CONSTRUCTION COMPLIANCE WITH SEC. 14-11-100 (A) TO (D) AND SEC. 14-11-100 (A) CITY CODE. PROVIDED STATUTES AND SEC. 14-11-100 (A) CITY CODE.
 - (SEE KEY) DIMENSION PER THE RECORDED PLAT OF CORRECTIVE CENTER LINE SUBDIVISION PLANS NO. 1.

Abilene Station MD No. 1



Abilene Station MD No. 1

Abilene Station MD No. 1



ENGINEERING SERVICE COMPANY
 ENGINEERS & SURVEYORS - PLANNERS
 1800 South Ross Street, Suite 1200, Abilene, Texas 79601
 (817) 672-1111
 FAX: (817) 672-1112

467-14 7/2